

VOLUME 1
SPECIALTY
PRODUCTS



TITAN MOVES THE WORLD™

TABLE OF CONTENTS

TITAN SPECIALTY PRODUCTS



In 2015, Titan showed its dedication to the American farmer once again by kicking off the production of agricultural specialty rubber products in Union City, Tennessee. Titan saw the American farmer needed higher quality rubber products than the standard imported products being offered and started manufacturing durable high quality rubber products for all types of livestock needs. Not only has the company filled this need, but Titan has done so with the safety and comfort of your animals as a top priority.

In addition to agricultural specialty products, Titan now offers top quality mud flaps for use on semi-trucks and dump trucks.

Titan is a company dedicated to providing solutions for our customers. If you have a special request for a rubber product, please contact Titan.

All products proudly made in the USA.

MUD FLAPS	3
DESIGN FEATURES	3
PARTS LIST	3
PRODUCT IMAGES	3
CATTLE MATS	4-5
DESIGN FEATURES	4
PARTS LIST	4
PRODUCT IMAGES	5
STALL MATS	6-7
DESIGN FEATURES	6
PARTS LIST	6
PRODUCT IMAGES	7
CONTACT NUMBER	8



MUD FLAPS

For use on semi-trucks or dump trucks.

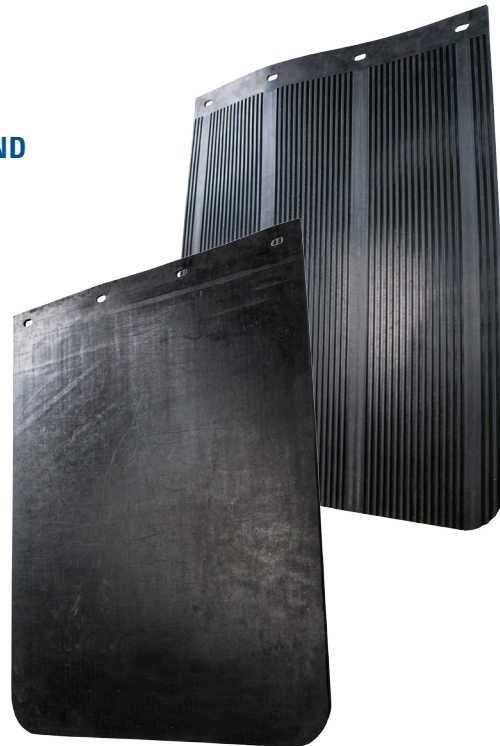
DESIGN FEATURES

RIBBED BACKING FOR REDUCED WATER SPRAY

HIGH TENSILE STRENGTH NYLON-REINFORCED RUBBER COMPOUND FOR INCREASED DURABILITY AND ANTI-SAIL PERFORMANCE

FLEXIBLE RUBBER COMPOUND RESISTS PERMANENT CREASING COMMON IN PLASTIC FLAPS

CUSTOM MUD FLAPS AVAILABLE UPON REQUEST



PART LIST

Part #	Width	Height	Thickness	Front	Back
101001TTC	24	30	1/2"	Smooth	Ribbed
101002TTC	24	30	1/4"	Smooth	Ribbed
101003TTC	24	24	1/2"	Smooth	Ribbed
101004TTC	24	24	1/4"	Smooth	Ribbed

CATTLE SLAT MATS

CATTLE SLAT MATS

For use in slatted cattle confinement barns.

DESIGN FEATURES

FULLY VULCANIZED NATURAL SYNTHETIC RUBBER BLEND

- High tensile strength for durability
- Soft, low durometer for the ultimate animal comfort
- Moisture-resistant

AGGRESSIVE .3" DEEP DOUBLE BUTTON TREAD PATTERN

- Animals move with confidence like natural environment
- Helps reduce lameness caused from slipping
- Helps reduce hoof and joint issues caused by hard surfaces

PATENT PENDING INTERLOCKING EDGE LUG DESIGN

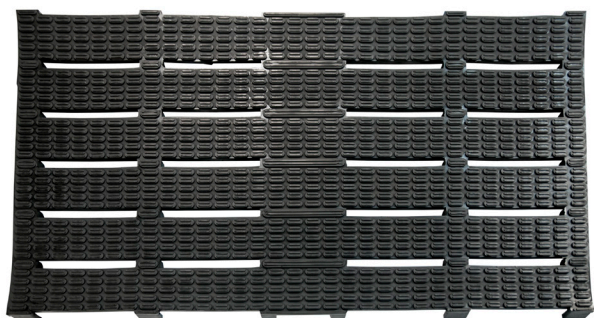
- Only design that secures the mat edges down
- Keeps waste materials from getting under mats
- Keeps mats securely in place

1/4" THICKER THAN COMPETITOR'S STANDARD MAT

PART LIST

Part #	Width	Length	Thickness	Top	Slat Design
110001TTC	48	72	1.05"	Double Button	Custom Precast
110002TTC	48	72	1.05"	Double Button	Custom Precast
110003TTC	48	72	1.05"	Double Button	Hog Slat
110004TTC	48	72	1.05"	Double Button	Hog Slat
110005TTC	48	72	1.05"	Double Button	Derocher Precast
110006TTC	48	48	1.05"	Double Button	Derocher Precast
110007TTC	48	60	1.05"	Double Button	Superior Concrete
110008TTC	48	60	1.05"	Double Button	Superior Concrete

HOG SLAT ▼



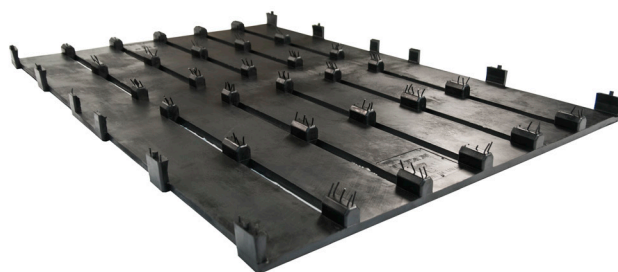
▼ HOG SLAT



HOG SLAT ▼



▼ HOG SLAT



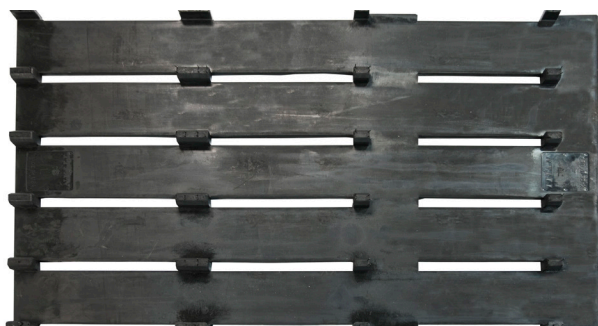
CUSTOM SLAT ▼



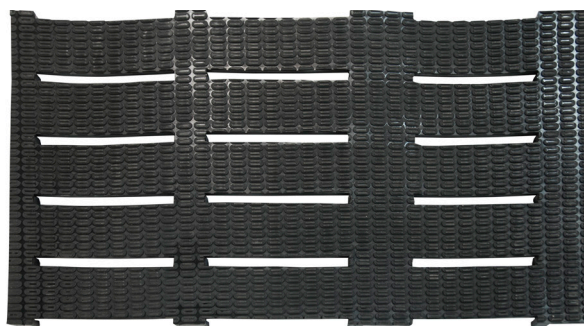
▼ CUSTOM SLAT



CUSTOM SLAT ▼



▼ CUSTOM SLAT



STALL MATS

STALL MATS

For use in beef cattle, dairy cattle, equestrian or swine barns for animal comfort. May also be used in workshops and industrial applications.

DESIGN FEATURES

FULLY VULCANIZED NATURAL SYNTHETIC RUBBER BLEND

- High tensile strength for durability
- Soft, low durometer for comfort in any application
- Moisture-resistant

MULTIPLE TREAD PATTERNS FOR DIFFERENT APPLICATIONS

- Animals move with confidence like natural environment
- Helps reduce lameness caused from slipping
- Helps reduce hoof and joint issues caused by hard surfaces

MULTIPLE THICKNESSES FOR COST VS COMFORT OPTIONS

CUSTOM DESIGN AVAILABLE UPON REQUEST

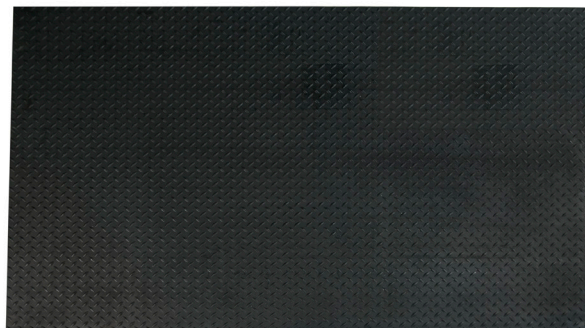
PART LIST

Part #	Width	Length	Thickness	Tread Design
111003TTC	48	72	0.375"	Smooth
111001TTC	48	72	0.75"	Smooth
111004TTC	48	72	0.75"	Diamond Plate
111002TTC	48	72	1.05"	Double Button

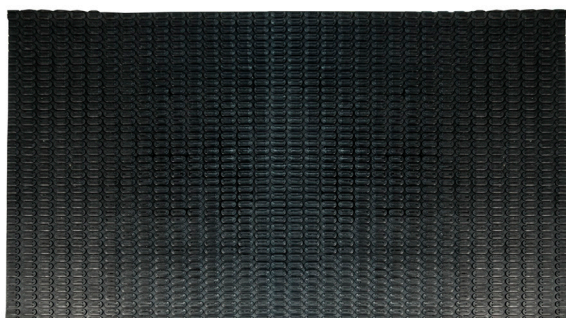
DIAMOND PLATE $\frac{3}{4}$ " ▼



▼ DIAMOND PLATE $\frac{3}{4}$ "



DOUBLE BUTTON 1.05" ▼



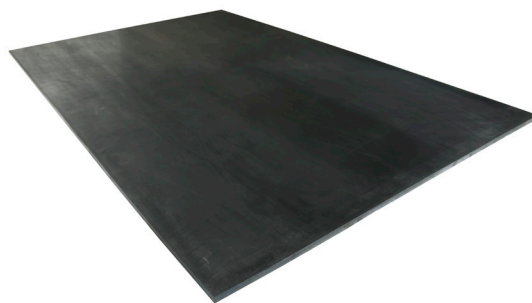
▼ DOUBLE BUTTON 1.05"



SMOOTH $\frac{3}{4}$ " ▼



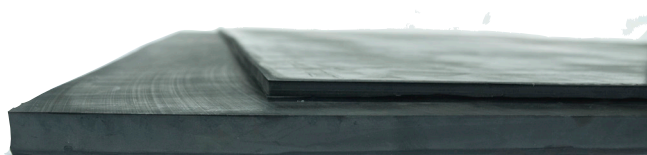
▼ SMOOTH $\frac{3}{4}$ "



SMOOTH $\frac{3}{4}$ " ▼



▼ SMOOTH .375" AND $\frac{3}{4}$ "





Titan Customer Care

PHONE: 515.265.9230

FAX: 515.265.9301

WEB: www.titan-intl.com

TTSP_02.16

© 2016 Titan International, Inc. All Rights Reserved. Quincy, IL. Materials and specifications are subject to change without notice.